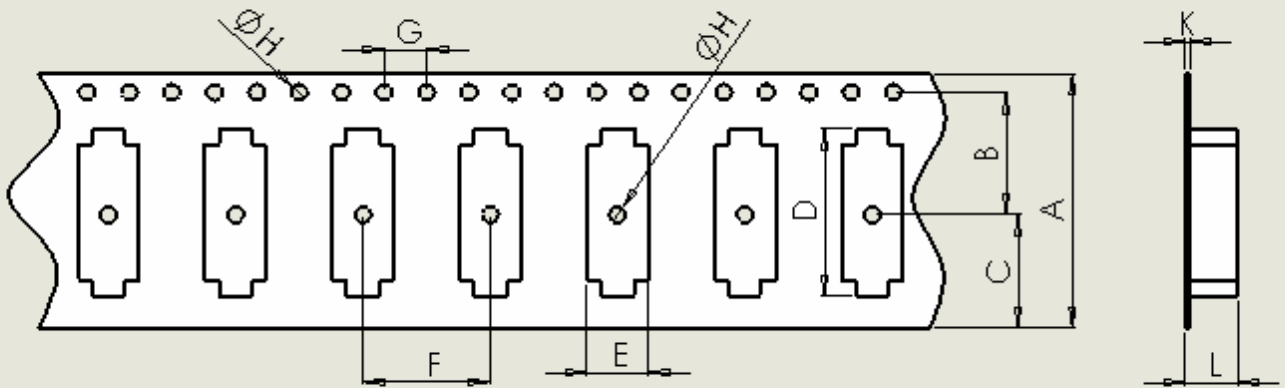
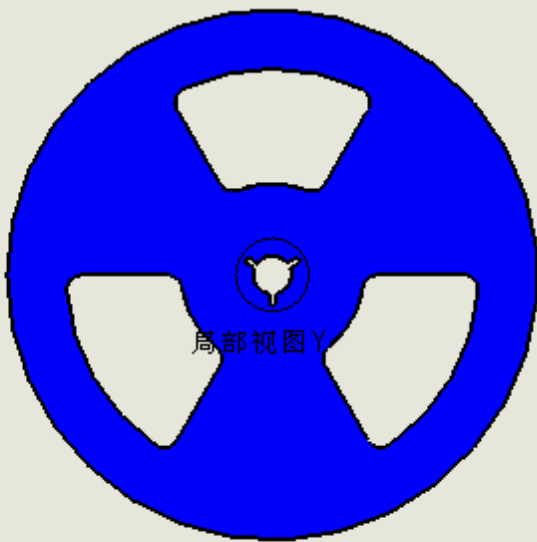


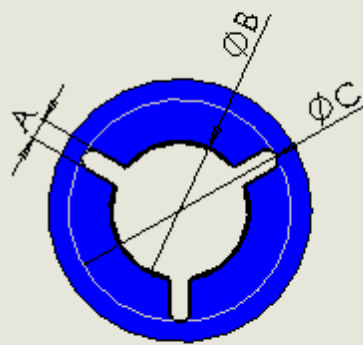
TAPE AND REEL SPECIFICATION



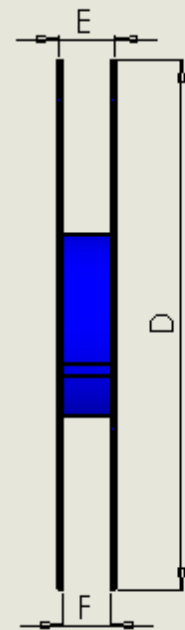
TYPE	A	B	C	D	E	F	G	H	K	L
S2	24	11.5	10.7	15	5	12	4	1.5	0.4	4.5
S4	24	11.5	10.7	15	5	12	4	1.5	0.35	3.7
M4	24	11.5	10.7	11	8.8	12	4	1.5	0.35	4.5



1000pcs/reel

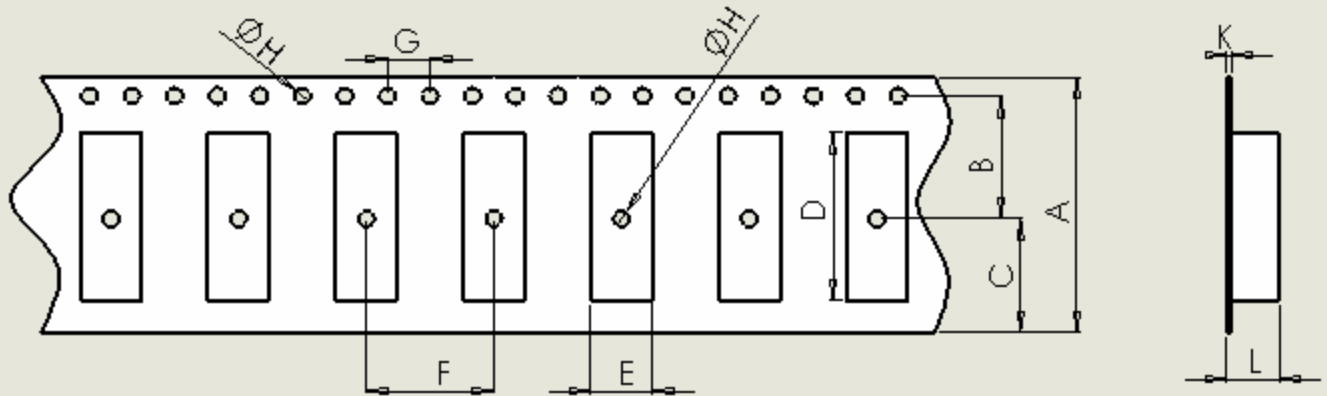


局部视图 Y

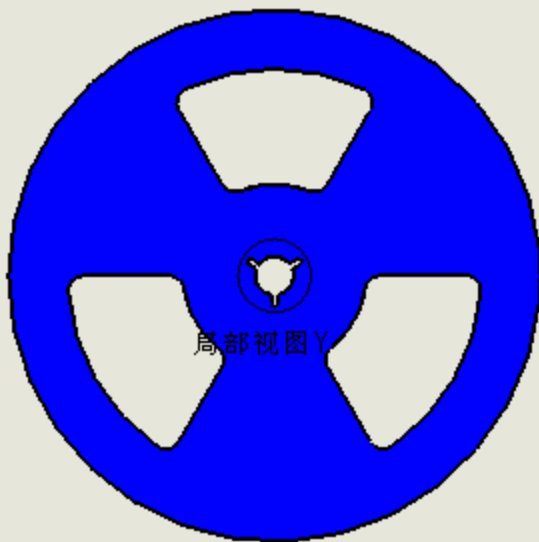


TYPE	A	B	C	D	E	F
S2, S4, M4	2	13	21	330	30.4	24.4

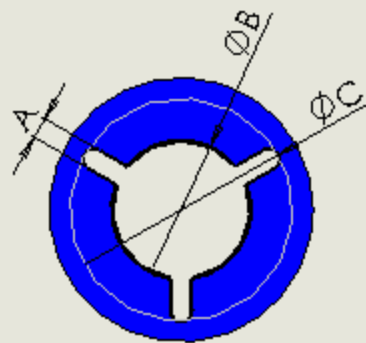
TAPE AND REEL SPECIFICATION



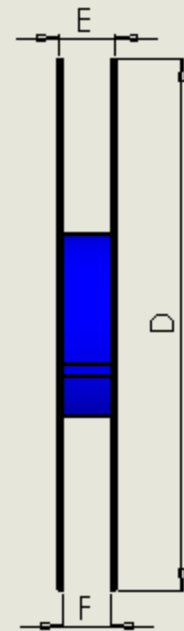
TYPE	A	B	C	D	E	F	G	H	K	L
S5, S6	24	11.5	10.7	13.5	5.5	12	4	1.5	0.4	5.5
M2	24	11.5	10.7	13.2	8.0	12	4	1.5	0.4	4
U2	24	11.5	10.7	18.2	11.4	12	4	1.5	0.4	5.5
C1, X, XP, V, VP	16	7.5	6.8	7.4	5.4	8	4	1.5	0.3	2.1
C2	16	7.5	6.8	6.5	4	8	4	1.5	0.3	2.1
C3, X3	12	5.4	4.8	5.4	3.5	8	4	1.5	0.3	1.3
C4	24	11.5	10.7	12.3	6	12	4	1.5	0.35	2.5



1000pcs/reel

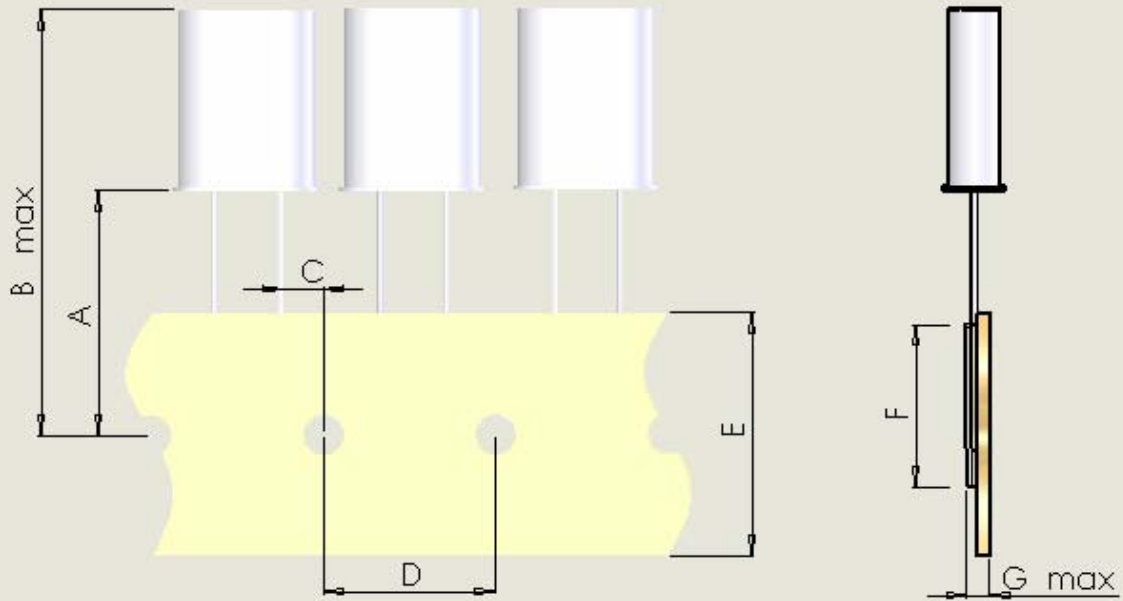


局部视图 Y

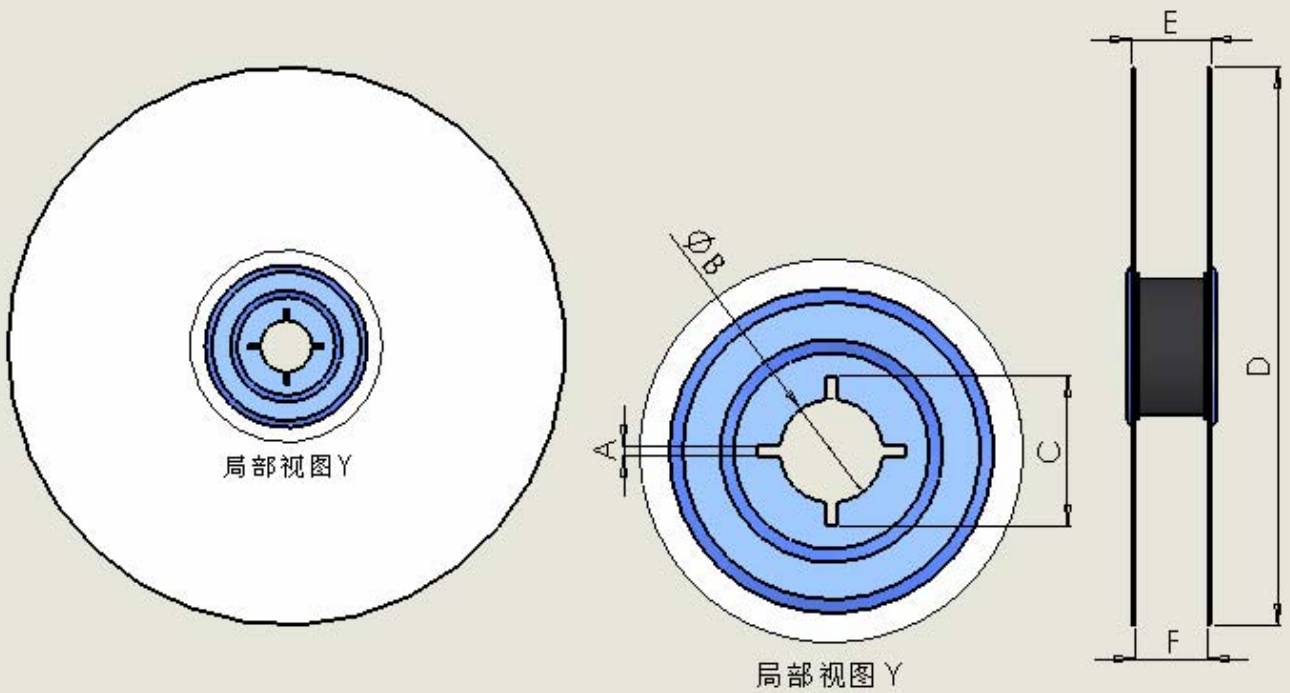


TYPE	A	B	C	D	E	F
S5, S6, M2, U2, C4	2	13	21	330	30.4	24.4
C1, X, XP, V, VP, C2	2	13	21	180	22.4	16.4
C3, X3	2	13	21	180	18.4	12.4

TAPE AND REEL SPECIFICATION



TYPE	A	B	C	D	E	F	G
U1, U3, M1, M3	18	32	3.9	12.7	18	12	0.9
S1, S3	18	24	3.9	12.7	18	12	0.9



TYPE	A	B	C	D	E	F
U1, U3, M1, M3, S1, S3	3	30.7	44	330	47	43